

# DigiSpider XE Series Digital Video Recorder

Remote / Central Monitoring      Smart Recording/ Search  
Panorama View      2 Way Audio      Smart Mobil Phone Support  
Missing & Unattended Object Detection      NVR Hybrid System Optional

## Key Features:

- **Remote Monitoring:** Provides phone line, DSL/dynamic-IP, DSL/static-IP access, max 16-channel, each channel can come from different DVR/camera
- **Remote Playback:** provides phone line, DSL/dynamic-IP, DSL/static-IP access, max 16-channel, provides bandwidth control
- **Smart Recording Technology (SRT)** can automatically distribute frame rates to the camera that needs it the most, base on alarm or motion detection.
- **Counter:** A camera covers the door entrance, the store can count the incoming customers, a camera covers the vehicle entrance, a parking lot can count the incoming cars.
- **Object Search** allows you to specify a zone on an image and perform a search based on any motion occurred within that zone.
- **Central Monitoring:** Provides 24 cameras in one screen, from multiple DVR with auto-record/notify when motion occurred.
- **Event Notification:** Provides email and hotline notification, on events like camera motion/video lost/sensor detection
- **Video backup:** Support for Windows 7/ XP/Server 2003 burning software, directly burning files into USB drive, CD media, to backup recorded video

**Digispider XE Series** Digital Video Recorder (DVR) is a low cost, full-featured digital video recording system designed to replace existing analog recording systems. With its advanced digital technology, powerful feature set, and user-friendly graphical user interface, the **XE Series** DVR meets the many different needs of security and surveillance applications around the world.

The **XE Series** DVR is a multi-tasking system that makes it possible to process alarms, view live video, play back recorded video, archive video to a network drive, and monitor live/recorded images from a remote location, while simultaneously recording images. All



- **PTZ Camera:** Embedded PTZ control panel. PTZ dome turns to a preset position for region of interest on.
- **Smart Mobil Phone Support:** iPhone, iPad, Blackberry, Android, Symbian smart mobil phone

of these functions are protected by hardware and software watchdog circuitry, which ensures the reliability of your system. Complete with keyboard and mouse, the **XE Series** DVR is the ideal foundation for new security installations. With a maximum recording speed of up to 30 images per second, built-in multiplexer and PTZ functions, the **XE Series** DVR replaces traditional analog Multiplexer / VCR combinations in both price and performance. Available in 4, 8 or 16 channel configurations, and delivering 6-100 days of video history storage, the **XE Series** DVR is the affordable solution to your security needs.

**DigiSpider**

Digital Video Solution

# Product Specifications

## • Security Authentication

The DVR provides 3 level users: the supervisor; power user and user. The supervisor has all privileges. Supervisor can assign some functions to power user and user, such as what cameras they can view, whether they can start or stop recording etc.

## • Display

- Screen layout: 1/4/6/8/9//10/13/16
- Rotating display: 1 or 4 windows
- Image resolution: selectable 720x480, 640x480, 320x240
- Display: adjustable: contrast /hue / brightness / saturation
- Display resolution: 1280 x1024 pixels

## • Record

- Motion / Non-stop / Schedule / Event Trigger Recording
- Pre- and Post- event recording
- SRT (Smart Record Technology), automatically assigns more frames to the heavy motion channel, so each channel can reach max. fps in case of necessary
- Compression: Wavelet / MPEG4/H264 selectable

## • Playback

- Search by camera date and time
- Search and playback Motion, Alarm and POS event
- Playing back in a specified time period
- Playing back in Single, Thumbnail, Quad and Multiple Cameras
- Whole picture zoom-in and zoom-out
- Maximum video clip is 5 minutes, but can be manually merge to larger video clip
- Manually drag the slider to fast forward or rewind
- Fast playback by 1,2,4,8 times normal speed

## • Motion Detect

- Software built-in motion detect function
- Complicated geographic filter masking
- 10 different sensitivity levels
- Can trigger record, phone notification, email notification, camera pop-up, object counting, event logging etc

## • PoS

- Provide parallel port POS connection
- Text overlay POS transaction data on related camera signal
- Record POS transaction data with video and POS log

## • Camera Pop-up

- Popping up a camera window on an motion event
- Dwelling time and interval adjustable

## • object Tracking

Tracking moving object automatically

## • Counter

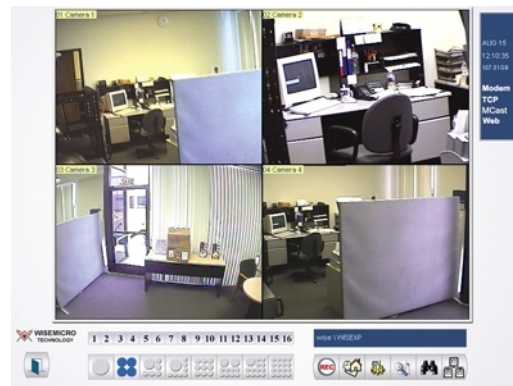
Set from-area and to-area, object comes from from-area to to-area called IN, object comes from to-area to from-area called OUT, you can setup one-way counter or two-way counter, to count incoming and outgoing object

## • System Log

Logging system activities into system log.

## • Video Data Backup

Support for Windows XP/Server 2003 burning software, directly burning files into media



## • Scheduling

The DVR can work with multiple schedule, such as what time to record in motion, what time to record in straight, and what time to have no record, etc.

## • Digital Signature (Watermark Protection)

Watermark can be applied for all the recording video that prevents unauthorized modification

## • Remote Monitoring

- Remote view live video from DVR over Internet / intranet / phone line, max. 16 cameras at one screen
- Manage multiple DVR through a web-interfaced WebCam application
- Using Dynamic DNS support Dynamic IP
- Remote playback through a web browser
- Remote site PTZ camera control

## • Remote Playback

- Provide web browser remote playback, you can only access one channel at one time, provide bandwidth control over Internet playback
- Provide Remote Playback Software, you can install it in client site, it's much more powerful, you can playback max 16-channel, you can choose Just-Play or Download-Play depend on bandwidth
- Remote playback has the same authority control as local

## • Alarm

The DVR has optional I/O unit, can accept sensor inputs and output relay triggering signals. Each I/O unit has 8in/16out, and it's stackable to control more inputs and outputs

## • Video-out

The DVR provides PC monitor VGA, HDMI connection, Optional upgrade for composite video out

## • PTZ Camera Support

- Connection: RS485, RS422, RS232, depend on camera control interface. Supported models: Canon VCC4/VCC3, Pelco-P, Ademco, LiLin, Digi-Dome, Dynacolor, Sony, Panasonic, Mintron, Kalatel, SamSung, Sensormatic
- Moving PTZ camera to preset location upon alarm event

## • Built-in Central Monitoring Protocol

All the cameras' signal can be sent to monitoring center if you allow, which allows a possibility to build the low-cost center

**Electronic / Video**

Input Voltage	100~240 VAC
Power Supply	500 W standard
Signal System	NTSC/PAL selectable
Operating System	Windows 7/ Windows XP
Recording Resolution	NTSC: 720×480 / 320×240
	PAL: 720×576 / 360×288
Compression	Wavelet / Mpeg4
Compressed Image Size	320×240, 3kb
	640×480, 9kb
Video Input	4-16 channels
Audio Input	1-16 channels
Video Output	VGA×1, HDMI x 1

**Mechanical**

Connectors	Video input: BNC
Mouse and Keyboard	PS2/ USB
COM1	DB9
Monitor	VGA, HDMI
Ethernet Port (1000base)	RJ45
56K Modem(Optional)	RJ11

**General**

Operating Temperature	5~40 Degree C (41~104F)
Relative Humidity	Maximum 85%
Desktop Dimension	18"×16"×8"
Unit Weight	26 lbs
Shipping Weight	32 lbs

**Video Capture**

Total Display	60-480 fps
Total Record	60-480 fps
Video Channel	4-16
Audio Channel	1-16
Compression	MPEG4,H264
Compression Rate	300:1
Hard Drive Capacity	Maximum 6000 GB
Remote Live Video Access	132 users maximum
Remote Playback	132 users maximum
Remote Setup	1 user maximum

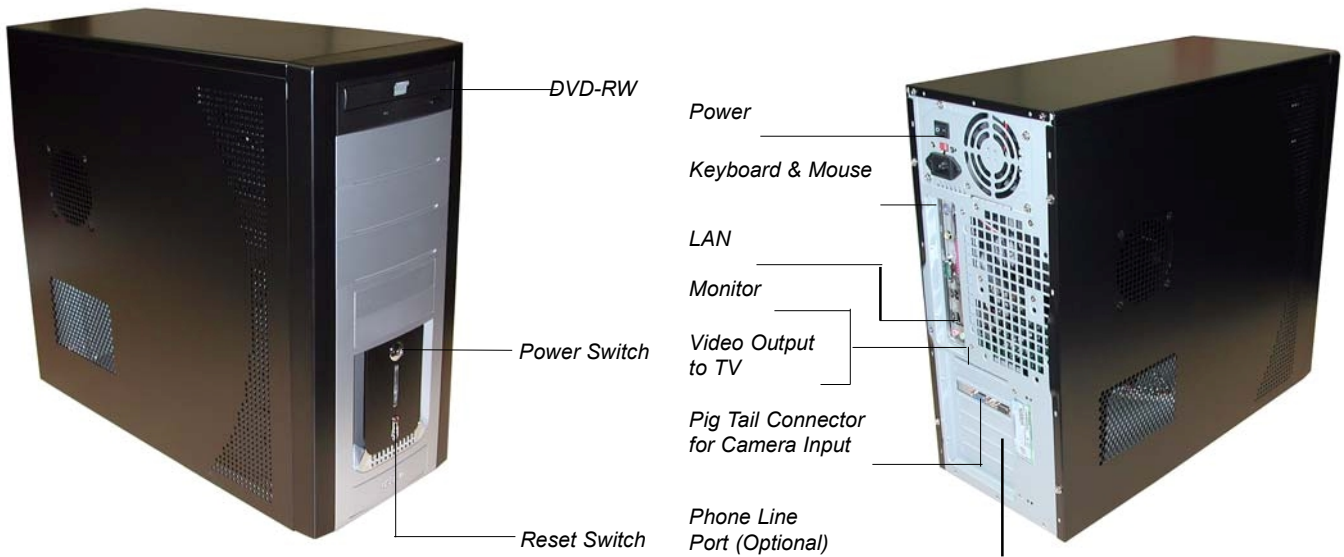
**Average Video Data Size**

320×240 3kb/frame  
640×480 9kb/frame

**Record Duration**

See reverse page for detail.

**Product Image**



## Model:

Model	Camera Input	Audio Input	Total Display Rate (FPS)	Total Record Rate (FPS)	Storage Size (GB)	Record Duration (Day)
XE-1016	16	16	480	480	1.5 TB	15-60
XE-916	16	8	480	240	1.5 TB	29 - 115
XE-908	8	8	240	240	1.5 TB	29 - 115
XE-816	16	4	120	120	1 TB	37 - 148
XE-808	8	4	120	120	1 TB	37 - 148
XE-804	4	4	120	120	1 TB	37- 148
XE-516	16	2	60	60	1 TB	72 - 290
XE-508	8	2	60	60	1 TB	72 - 290
XE-504	4	2	60	60	1 TB	72- 290
XE-416	16	1	30	30	500GB	72 - 290
XE-408	8	1	30	30	500GB	72 - 290
XE-404	4	1	30	30	500GB	72 - 290

### Note:

- Storage calculation is base on average file size; actual file size and recording duration may vary.
- Average file size is base on 320x240 resolution.
- The small number of record duration is base on non-stop, and the large one is base on motion detect.
- Above data provide best quality at level 4, other choices from level 1 to level 5, might get longer record duration.
- For both storage and internet/intranet streaming, best video quality might be reduced if we select lower video quality.
- Contact our sales representative for additional assistance in calculating storage capacity for your application.

### Supplied Accessories

Keyboard, Mouse, Windows and DVR software. (Monitor **not** include )

### optional Accessories

External modem: for motion event hotline notification and remote view

WG-MT-19 19" LCD monitor

WG-MT-23 23" LCD Monitor

Note: We recommend the Uninterruptible Power Supplies (UPS) use for all DVR units.

**DigiSpider**

Digital Video Solution

Specification subject to change without notice.